

/ Historic Site of Wanggung-ri

As a result of the excavation research conducted from 1989 to the present, it was confirmed that the Wanggung-ri site was built as a palace during the late Baekje period and used for a certain period. and also It has been confirmed that the important buildings of the royal palace were demolished and a temple was built in its place.

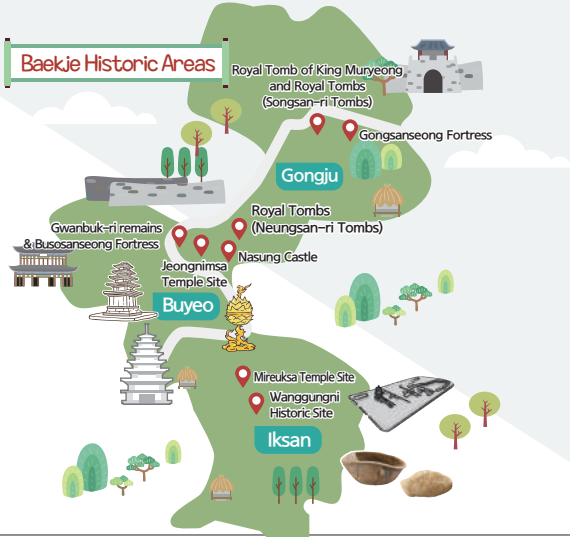
The Wanggung-ri site, which shows a good example of ancient East Asian royal palace structure, has well-preserved outer walls and internal facilities, so you can see the living space of the royal palace.

In the southern half of the palace, the space was divided into four stone axes in the east and west directions for ceremonies, ritual, and political life. The northern half is a garden and backyard, a space for resting in the palace, and There is a workshop that produced gold and glass, the most valuable items at the time, and the remains of a bathroom where Baekje's science and technology were applied.

/ Baekje Historic Site, a UNESCO World Heritage Site

The Baekje Historic Areas, which show the unique cultural, religious, and artistic beauty of the late Baekje period from 475 to 660, include the Iksan Wanggung-ri Site, Mireuksa Temple Site, Gongsanseong Fortress in Gongju, the Royal Tomb of King Muryeong and the Royal Tombwon, Gwanbuk-ri Site of Buyeo, Busosanseong Fortress, Wangneungwon, Jeongnimsa Temple Site, Naseong.

The Baekje Historic Area was registered as a World Heritage Site in 2015 after being evaluated as an exceptional evidence of Baekje's afterlife, religion, architectural technology, and artistic beauty, as well as showing the history of mutual exchange between ancient East Asian kingdoms such as Korea, China, and Japan.



**Viewing Information**

**Opening hours** : Tuesday–Sunday / 9 a.m. to 6 p.m

**admission fee** : free

**Closed** : Every Monday, January 1 every year

※ Provided, That if Monday is a public holiday, it will be opened and closed on the following weekdays

**directions**

**City bus** : Iksan Station, Terminal 65, 65-1  
( 40 to 50 minutes )

**Train** : KTX and SRT Get off Iksan Station → Use city bus

**Express Bus** : Get off Iksan Terminal → Use the city bus

**Car** : 10 minutes from Iksan IC on Honam Expressway



**Baekje Royal Palace Museum**  
BAEKJE ROYAL PALACE MUSEUM

666, Gungseo-ro, Wanggung-myeon, Iksan-si, Jeollabuk-do

**Phone** : 063-859-4632, 4795

**F a x** : 063-859-4639

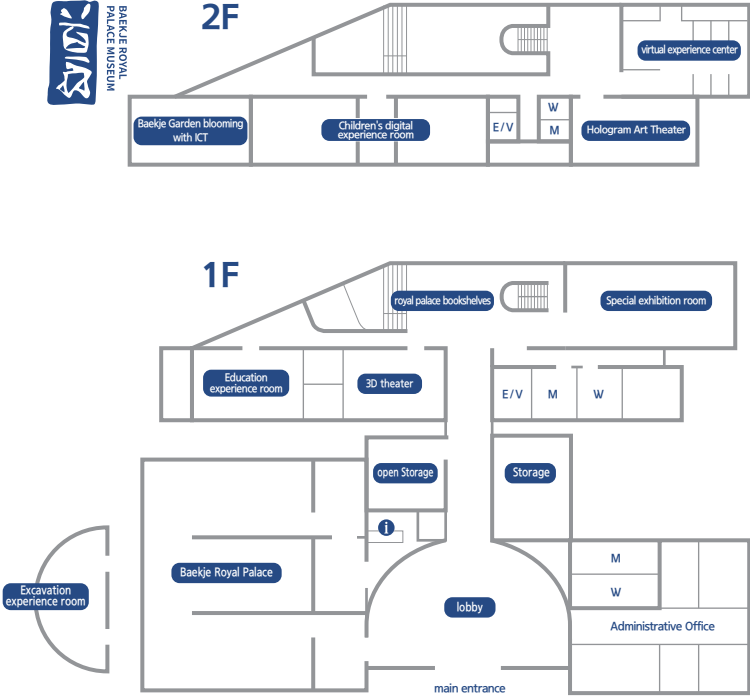
**Website** : [www.iksan.go.kr/wg/index.iksan](http://www.iksan.go.kr/wg/index.iksan)

Production : Lee Eun-seok, Baekje Royal Palace Museum, July 2022



Baekje Royal Palace Museum

**Baekje Royal Palace Museum**  
BAEKJE ROYAL PALACE MUSEUM



The Baekje Royal Palace Museum first opened in 2008 as the Royal Palace Museum to efficiently preserve and display the excavated cultural heritage and use it as educational materials as the importance of the royal palace remains was highlighted.

In addition, on July 8, 2015, the Wanggung-ri ruins, which show the structure and good example of the ancient East Asian royal palace, were listed as a UNESCO World Heritage Baekje Historic Site, highlighting the importance of the museum.

As part of the World Heritage Conservation and Management Project, the aging Wanggung-ri Relics Exhibition Hall was remodeled and the ICT Experience Center was expanded from August 2020, and the name was changed to Baekje Royal Palace Museum on October 15, 2021.

And in 2022, the museum and ICT technology were combined to complete the renovation and newly expanded and opened.



## / Baekje Royal Palace



Baekje Royal Palace is a space where you can meet King Mu's dream of restoring Baekje. I hope you will have time to face the dream of Baekje that blossomed in Iksan through the relics of Baekje people 1,400 years ago and the royal palace revived with advanced digital technology.

## 01 Iksan, Baekje Kingdom



Through the remains and records related to King Mu of Baekje, you can also see the appearance of Iksan, Baekje Kingdom.

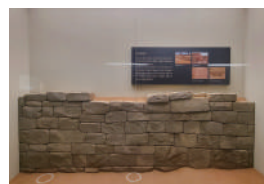


tile printed with capital  
Baekje / Iksan Wanggung-ri Site

## 02 The architecture of the royal palace



This is a space where you can see the excellent architectural and civil engineering techniques of Baekje people applied to the construction of the royal palace.



East-West embankment 1 (model)



Fill-up layer (model)

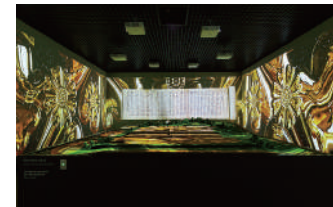


Palace (palace wall) (model/1/4 reduction)

## 03 The structure of a royal palace

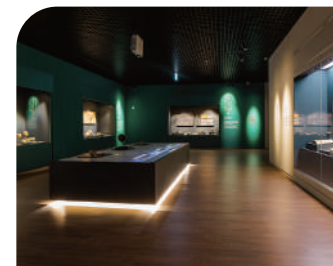


This is a corner where you can meet King Mu's dream through immersive videos applied with advanced digital technology.



## 04 The living culture of the royal palace

Through the relics excavated from the Wanggung-ri ruins, you can see the living culture of the royal palace.



toilet-shaped earthenware  
Baekje / Iksan Wanggung-ri Ruins



Landscape Stone (Children's Stone)  
Baekje / Iksan Wanggung-ri Ruins



Crucible  
Baekje / Iksan Wanggung-ri Site



lamp  
Baekje / Iksan Wanggung-ri Site

## 05 From the palace to the temple



After the end of Baekje, the royal palace was turned into a temple. The existence of the temple can be known through the tile with the name of the temple engraved on it. Also, through holograms, you can take a three-dimensional look at the reliquary and glass bottles excavated from the stone pagoda.



Tiles engraved with the words 'Wanggungsa Temple'  
Unified Silla / Iksan Wanggung-ri Site



The roof tile stamped with the seal of  
Daegwansa Temple  
Unified Silla / Historic Site of Wanggung-ri,  
Iksan



Tiles with the seal of 'Gwangungsa Temple'  
Unified Silla / Iksan Wanggung-ri Site